



Building a Community Whilst Restoring
a Landscape: Shannon Preserve Land
Restoration & Management Plan
By Duraid Abukhamseen



Overview

Restoring the ecological integrity of Shannon's Preserve is not just a project; it is a testament to our commitment to preserving the natural heritage and biodiversity that makes this land so precious. At the heart of this endeavor lies the desire to heal and rejuvenate a degraded landscape, allowing it to flourish once again as a thriving habitat for both humans and non-human inhabitants.



01

INTRODUCTION

Rationale, Site, Geographic Context, Community, Vision

02

Past, Present, & Future

Context, Guiding Principles, Reference Models, Existing Conditions

03

Methods

Invasive Species Management, Assisting Succession, Key Steps

04

Monitoring & Management

Measurable goals & monitoring, repeat photography, Community engagement

01



Introduction

What is Shannon Preserve?

Why are we restoring it?





Introduction

- Shannon Preserve Description
 - Corn Field, Pine Plantation, Part of larger habitat
- Location
 - North of the bog, and an SEWRPC environmental corridor
 - Value and problem with Highway 33
- Vision
 - Northern mesic forest, mesic prairie, shrubland, apple orchard, community arts center



The Past To The Present

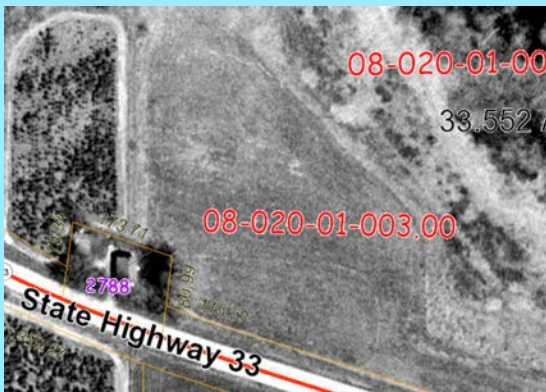


1836

1941

1970

Today



Physical Conditions Needing Repair

The Corn Field

-
-
-
-
-
-

Pine Plantation



Guiding Principles



ENVISIONED FUTURE CONDITIONS



Reference Models



Reference Models



Methods



- • • Invasive Species Management
Cut stump, the math, the time, why not mowing?

Achieving Desired Habitats • • •
Thin the canopy, plant cover
crop, let nature drive

Key Steps

Year 1

Fall

...

Clear invasives

Winter

...

Thin the pine canopy



Key Steps

Year 2

Fall

...

Introduce native trees

Spring

...

Prepare the ground for
cover crop



Key Steps

Year 2

Fall

...

Introduce native trees

Spring

...

Prepare the ground for
cover crop



Key Steps

Year 3

Fall

...

Introduce native grasses

Spring

...

Introduce charismatic species

Summer

...

Monitoring, mowing, and planning



Year 6 & Beyond

- Year 6: Preparing an area for apple orchard
- Year 7: planting young apple trees



01

Measurable Goals & Monitoring

02

Survey Sites & Repeat
Photography

Ideal Management Team

03

Management & Monitoring



Thats All Folks!