

# Succession in Progress

By Elizabeth Metz

An Initiative of the Land Restoration School at Crossroads

## Project Site

Site Prompt:

“The arrival experience -

Focus on human engagement,

Revealing restoration work,

Demonstrating best practices”



## Project Site

Division of sites creates a more manageable project.



# History of the Landscape

“A sea of  
concrete”



# History of the Landscape

“The Secret  
Nursery”



# History of the Landscape

“Potential Beauty”



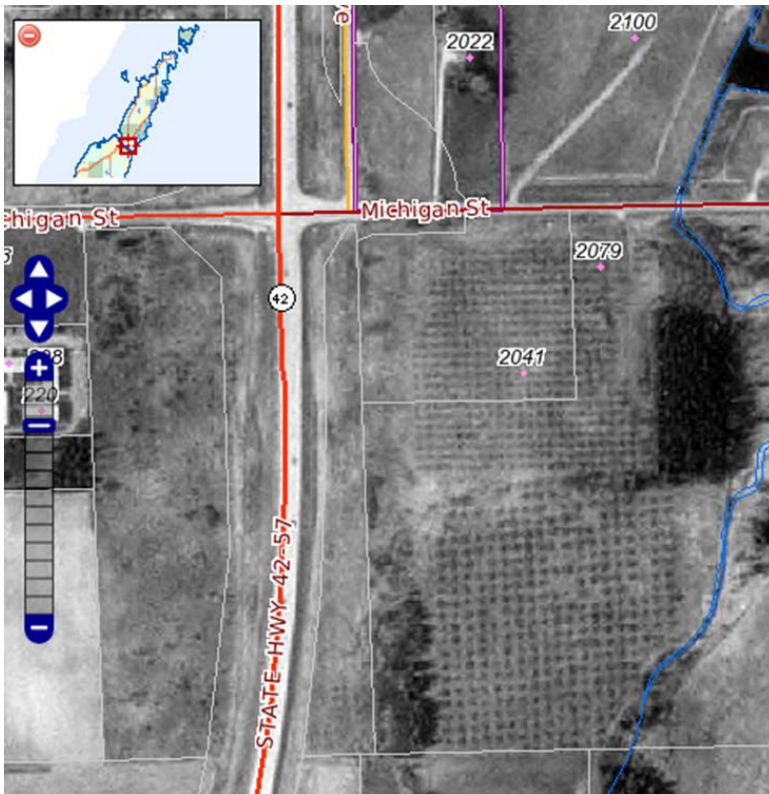
# History of the Landscape

“Gravel Graves”



# History of the Landscape

“Reading the on the Line”





# History of the Landscape

“Unsettling  
Scrapes”



## Vision for the Future

Reed Canary Grass (or RCG)  
hiding among some native species  
at the roadside habitat



## Vision for the Future



Bioswale with a busy  
bee working on *Monarda fistulosa* (bee-balm)



## Vision of the Future

Work already in Progress!



# Vision of the Future

Potential in Everything



# Managing Main Campus



Invasive Versus Native



Buckthorn | Coneflower



## Managing Main Campus

Reed Canary Grass with seed heads removed at the Roadside Habitat



## Managing Main Campus

Ravishing Red-Osier Dogwood; Cute Coneflower; Magnificent Milkweed





# Conclusion



## Acknowledgements and Quick References

Special Thanks to Nancy Aten, Dan Collins, Chris Young, Jason Miller, and Chrissy Hanke for helping me with field assessments and improvements on my project and presentation. Thank you to all the professors and professionals who took time out of their summer to teach the LRS cohorts during our intensive program at Crossroads. Thank you to Crossroads at Big Creek for hosting the Land Restoration School.

- Crossroads at Big Creek. <http://crossroadsatbigcreek.org/>
- Web Soil Survey. <https://websoilsurvey.sc.egov.usda.gov/App/HomePage.htm>
- Wisconsin Department of Natural Resources: Natural Communities of Wisconsin. <https://dnr.wi.gov/topic/endangeredresources/communities.asp>
- Land Restoration School at Crossroads. <https://www.landrestorationschool.org/>
- GIS/LIO Door County, WI. <https://www.co.door.wi.gov/636/GISLIO>
- Harvard WorldMap. <https://worldmap.maps.arcgis.com/home/index.html>