



Growing Up(hill): Celebrating Succession

Presented by Emily Sautebin

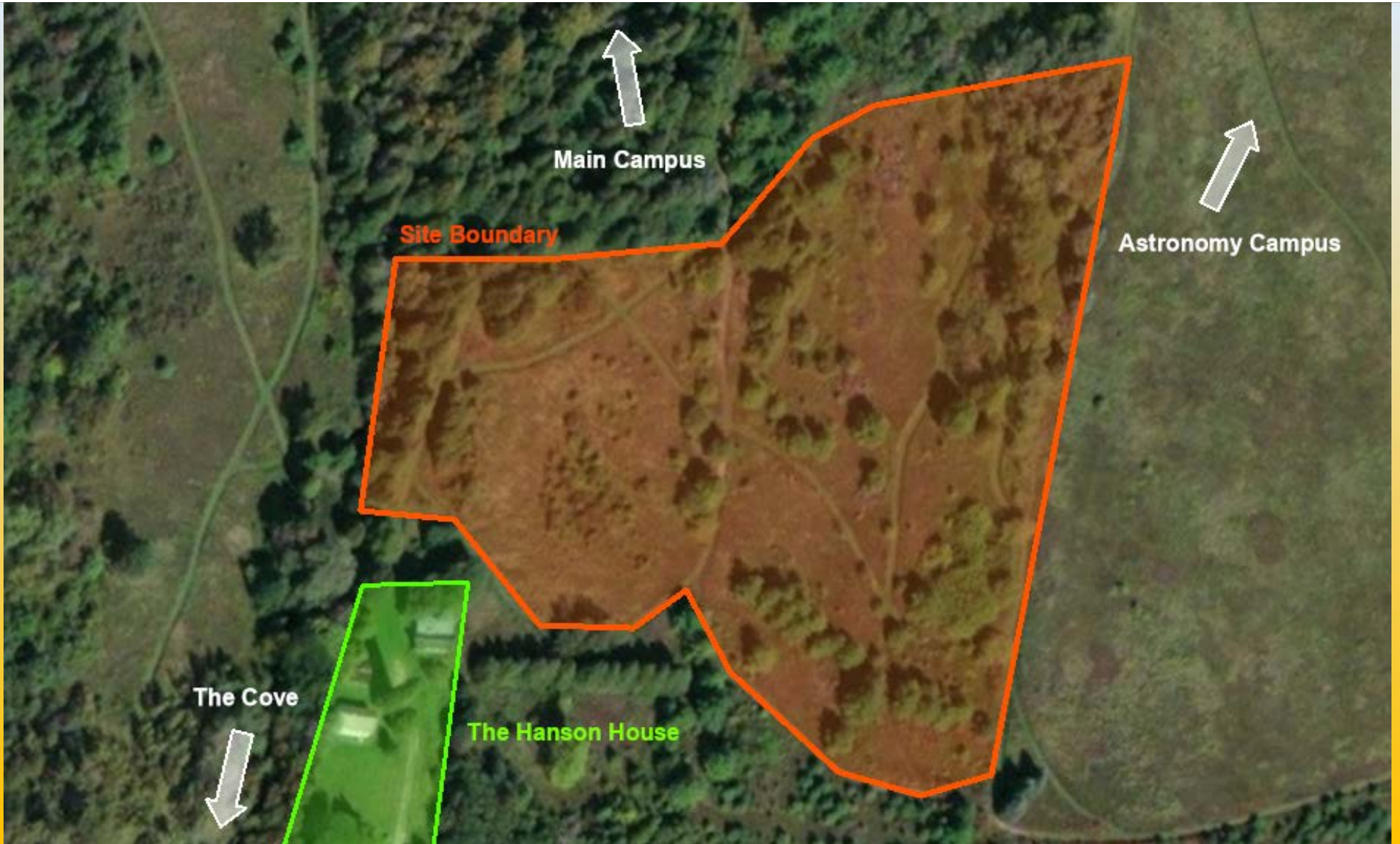
Prepared for



Introduction

- Six acres of exciting views
- Bordered by Big Creek and the Astronomy Campus
- Located in Big Creek's watershed





The Past and the Present

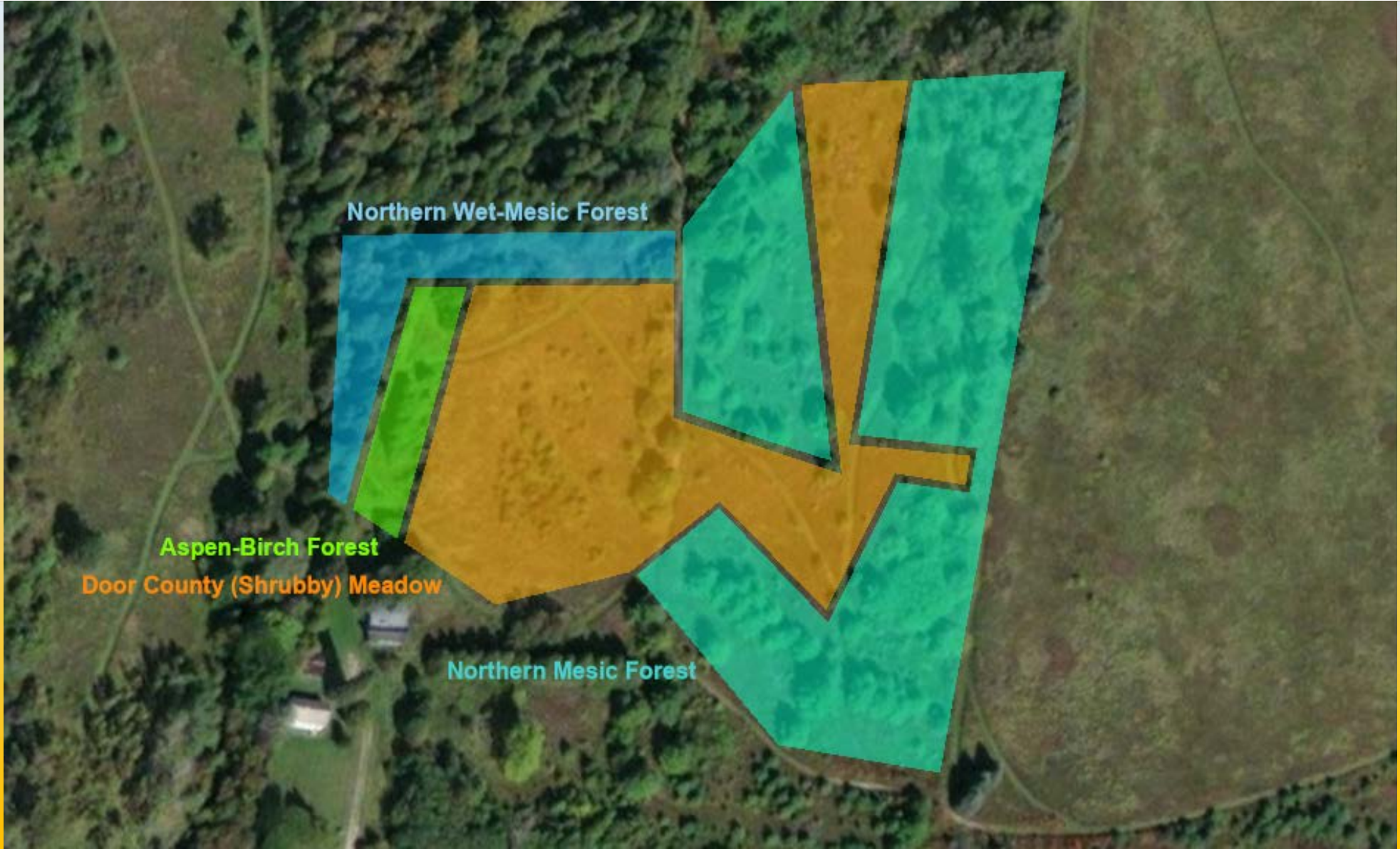
- Agricultural history (orchards and pastures)
- Wetland
- Five different soil types



The Past and the Present

- Surrogate Grassland (or Door County Meadow)
- Aspen-Birch Forest
- Northern Mesic Forest
- Northern Wet-Mesic Forest





My Vision

- Respect the Twofold Transition
 - Transition BETWEEN meadow and forest
 - Transition FROM meadow TO forest
- Create Inspiration and Celebration
- Honor the Past, Present, and Future



Ecological Restoration Goals

- Improve Ecological Health
 - Widen Big Creek's forested buffer
 - Heal degraded landscapes and maintain healthy ones
- Encourage a Slow Reforestation Process
 - Door County Meadow to Aspen-Birch Forest to Northern Mesic Forest

Guiding Principles

- Adaptive Restoration
- Visible Restoration
- Restoration That Radiates



Reference Models

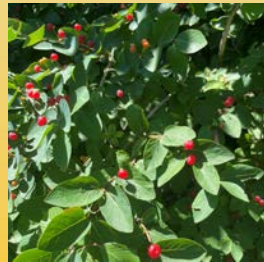
- Door County Meadow
- Aspen-Birch Forest
- Northern Mesic Forest
- Northern Wet-Mesic Forest





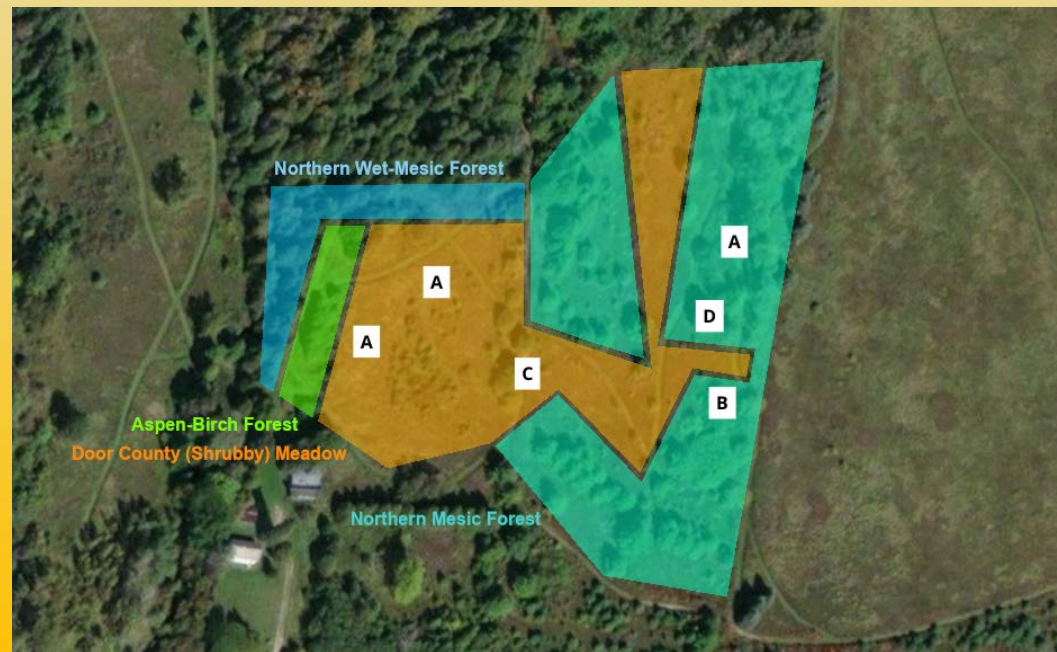
Invasive Species to Remove

Common Name	Latin Name
Honeysuckle, invasive species	<i>Lonicera</i> spp.
Buckthorn, invasive species	<i>Rhamnus</i> spp.
Canada thistle	<i>Cirsium arvense</i>
Spotted knapweed	<i>Centaurea stoebe subsp. micranthos</i>



Common Name	Latin Name
Reed canary grass	<i>Phalaris arundinacea</i>
Common lilac	<i>Syringa vulgaris</i>
Apple tree	<i>Malus pumila</i>
Norway maple	<i>Acer platanoides</i>

Plant to Remove	Zone or Letter on the Image Below
Honeysuckle, invasive species	DCM, AB, NM, NWM
Buckthorn, invasive species	AB, NM, NWM
Canada thistle	DCM
Spotted knapweed	DCM
Reed canary grass	A
Common lilac	B
Apple tree	C
Norway maple	D



Native Species to Add

Door County Meadow (DCM)		
Common Name	Latin Name	Type
Brown-eyed Susan	<i>Rudbeckia triloba</i>	Forb
Wild bergamot	<i>Monarda fistulosa</i>	Forb
Yellow coneflower	<i>Ratibida pinnata</i>	Forb
Early wild rose	<i>Rosa blanda</i>	Shrub

Aspen-Birch Forest (AB)		
Common Name	Latin Name	Type
Trembling aspen	<i>Populus tremuloides</i>	Tree
Paper birch	<i>Betula papyrifera</i>	Tree
Chokecherry	<i>Prunus virginiana</i>	Shrub
Old-field cinquefoil	<i>Potentilla simplex</i>	Forb

Northern Mesic Forest (NM)		
Common Name	Latin Name	Type
Sugar maple	<i>Acer saccharum</i>	Tree
Ironwood	<i>Carpinus caroliniana</i>	Tree
Beaked hazelnut	<i>Corylus cornuta</i>	Shrub
White baneberry	<i>Actaea pachypoda</i>	Forb

Northern Wet-Mesic Forest (NWM)		
Common Name	Latin Name	Type
Northern white-cedar	<i>Thuja occidentalis</i>	Tree
Silver maple	<i>Acer saccharinum</i>	Tree
Wild black currant	<i>Ribes americanum</i>	Shrub
Fringed loosestrife	<i>Lysimachia ciliata</i>	Forb

Choose a zone based on the planting area's location on the image in the next slide, which represents the possible future.



Stages of Restoration

Stage 0: Analysis of Existing Conditions

- Perform assessments

Stage 1: Kickstarting Restoration

- Tackle honeysuckle, buckthorn, and reed canary grass

Stage 2: Shaping the Natural Communities

- Widen Big Creek's forested buffer
- Tackle Canada thistle and spotted knapweed
- Girdle Norway maple

Stage 3: Shaping the Natural Communities, Continued

- Thin out common lilac and apple trees
- Plant area-appropriate plants in every zone

Stage 4: Kickstarting Restoration

- Remove Norway maple
- Perform assessments
- Update this plan

Acknowledgements

Thank you!

References

1. "Alfisols." *University of Idaho*, www.uidaho.edu/cals/soil-orders/alfisols.
2. "Aspen-Birch." *Wisconsin Department of Natural Resources*, dnr.wi.gov/topic/endangeredresources/communities.asp?mode=detail&Code=C25.
3. Aten, Nancy M. and Collins, Dan. "Ecological Restoration Plan." *Crossroads at Big Creek*, crossroadsatbigcreek.org/ecological-restoration-plan/.
4. *Door County Web Map*. map.co.door.wi.us/map/.
5. "Geology | Whitefish Dunes State Park." *Wisconsin Department of Natural Resources*, dnr.wisconsin.gov/topic/parks/whitefish/geology.
6. "International Principles and Standards for the Practice of Ecological Restoration." *Society for Ecological Restoration*, November 2019.
7. "Northern Mesic Forest." *Wisconsin Department of Natural Resources*, dnr.wi.gov/topic/endangeredresources/communities.asp?mode=detail&Code=CTFOR034WI.
8. "Northern Wet-mesic Forest." *Wisconsin Department of Natural Resources*, dnr.wi.gov/topic/endangeredresources/communities.asp?mode=detail&Code=CPFOR036WI.
9. *Online Virtual Flora of Wisconsin*. University of Wisconsin-Madison, wisflora.herbarium.wisc.edu/index.php.
10. "Surrogate Grasslands." *Wisconsin Department of Natural Resources*, dnr.wi.gov/topic/endangeredresources/communities.asp?mode=detail&Code=OSURRGRASS.
11. Sweeney, Bernard W. and Newbold, J. Denis, 2014. Streamside Forest Buffer Width Needed to Protect Stream Water Quality, Habitat, and Organisms: A Literature Review. *Journal of the American Water Resources Association (JAWRA)* 50(3): 560-584. DOI: 10.1111/jawr.12203.
12. *Web Soil Survey*. United States Department of Agriculture, websoilsurvey.sc.egov.usda.gov/App/WebSoilSurvey.aspx.
13. "Weed ID Sheets." *Good Oak Ecological Services*, goodoak.com/info/weeds/index.php.
14. *Wisconsin Historical Aerial Imagery Finder*. University of Wisconsin-Madison, maps.sco.wisc.edu/WHAIFinder/#7/44.750/-89.750.