

# Continuation of Wildlife Corridors in the Big Creek Estuary at The Cove

Hanan Ali

# Hanan Ali

Student at Land Restoration School -Big Creek at Crossroads

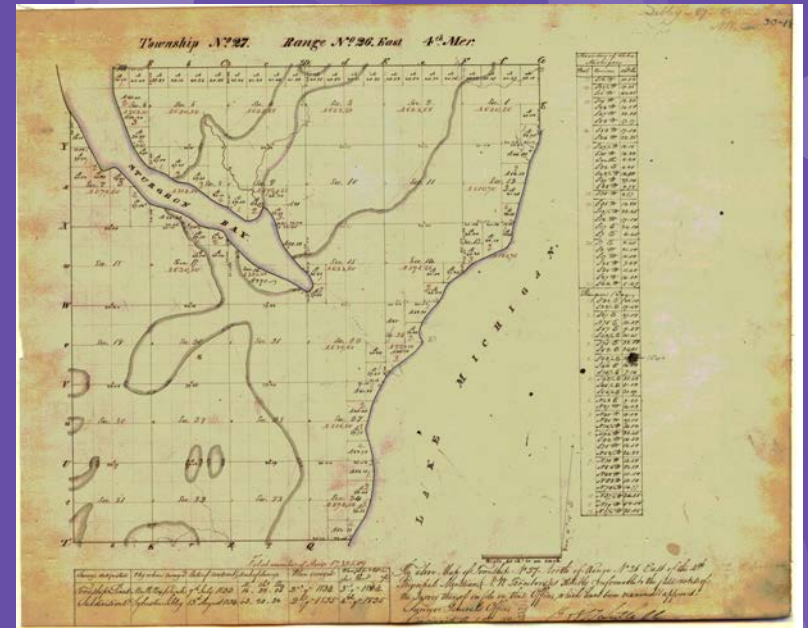
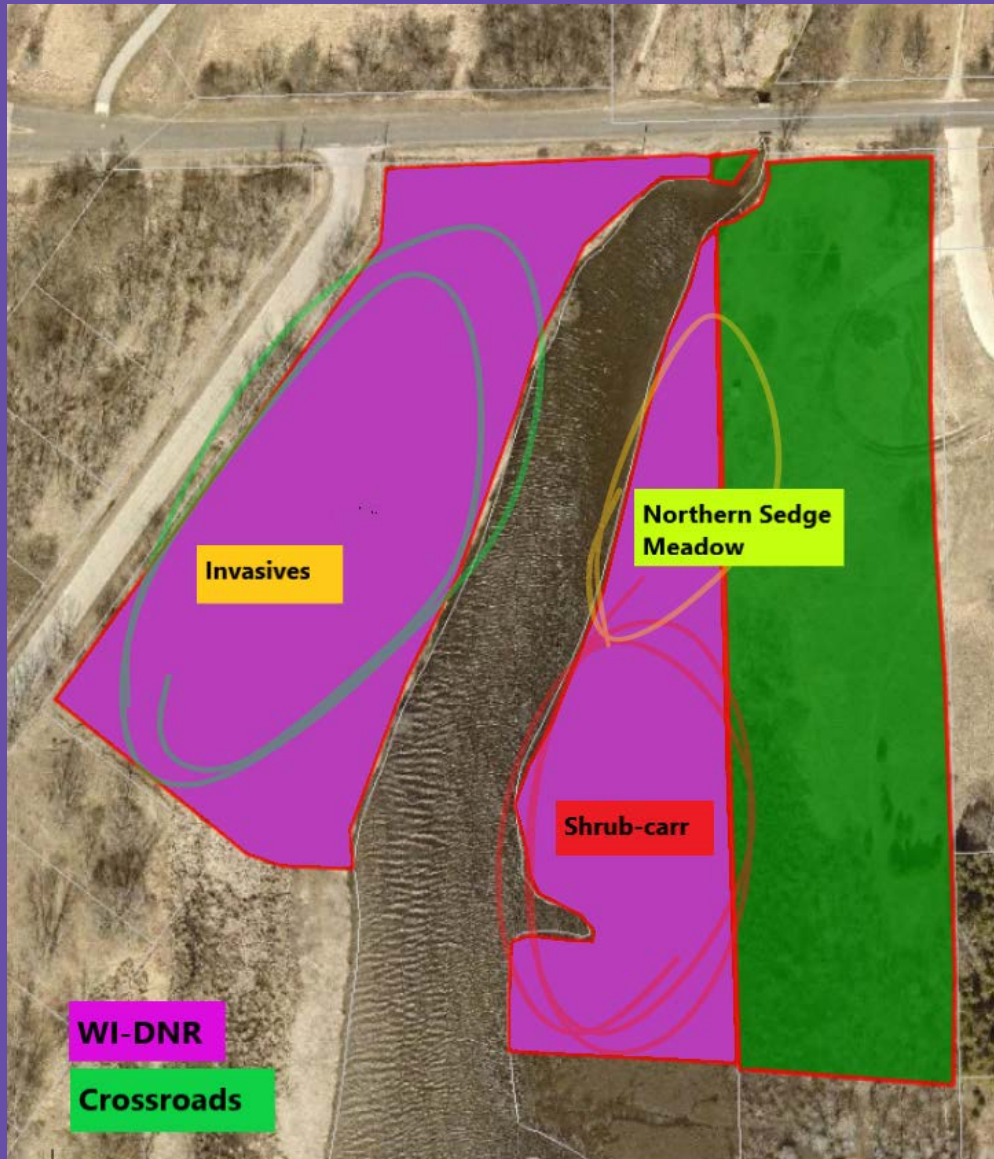
Recently graduated from the University of Wisconsin -Whitewater

Bachelor of Science Degree in Environmental Science - Geoscience Emphasis I  
Certificate in Geographic Information Systems



# Location of Site

Nature does not operate on property lines...



Township 27 North, Range 26 East Section 9

# Historical Context

“Many maps and borders represent modern geopolitical divisions that have often been decided without the consultation, permission, or recognition of the land's original inhabitants. Many geographical place names also don't reflect the Indigenous or Aboriginal peoples languages.”  
(CrashCourse 2021, 10:20)

- Archaeological Finds by the cove.
- Former golf course on the western side. (Blue)
- Agriculture on the eastern end. (Green)
- Notice the changes in Big Creek.

“When we try to pick out anything by itself, we find it hitched to everything else in the universe.” — JOHN MUIR

1938



2022





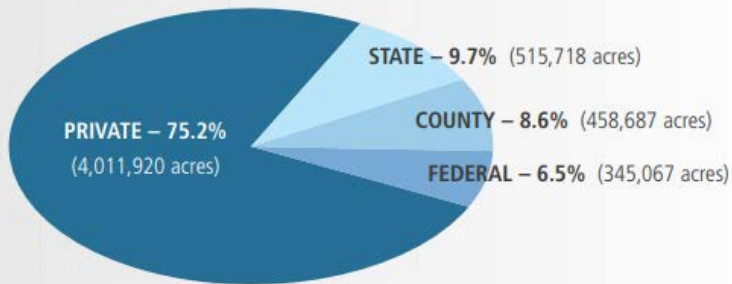


The significance of the site...

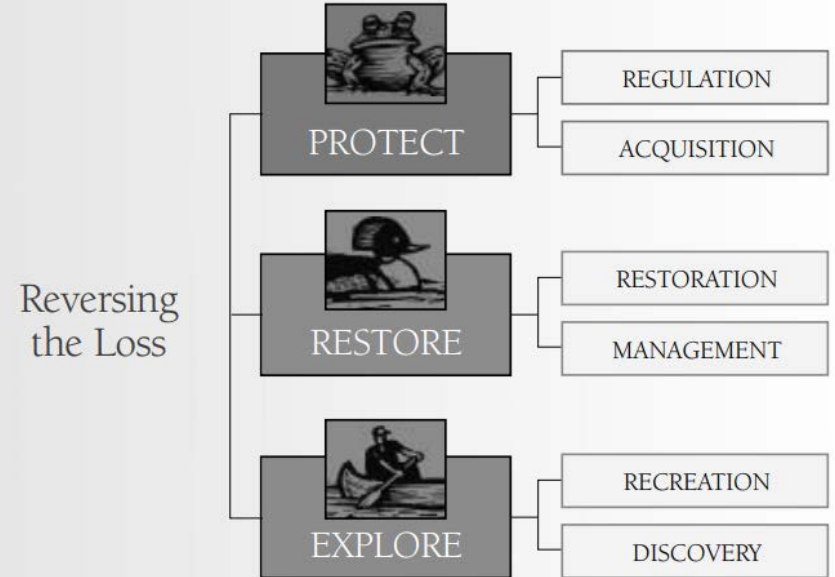
# Wetlands

The restoration of a disappearing ecosystem.

Wisconsin Wetland Ownership



Wisconsin's Wetland Strategy



# Dysfunctions

- Three Primary Dysfunctions:
  - Western and Eastern Side - Disconnected
  - Dead Ash in Shrub-carr Section
  - Lack of Certain Native Diversity





# Western and Eastern Side - Disconnected

There is potential in healing.

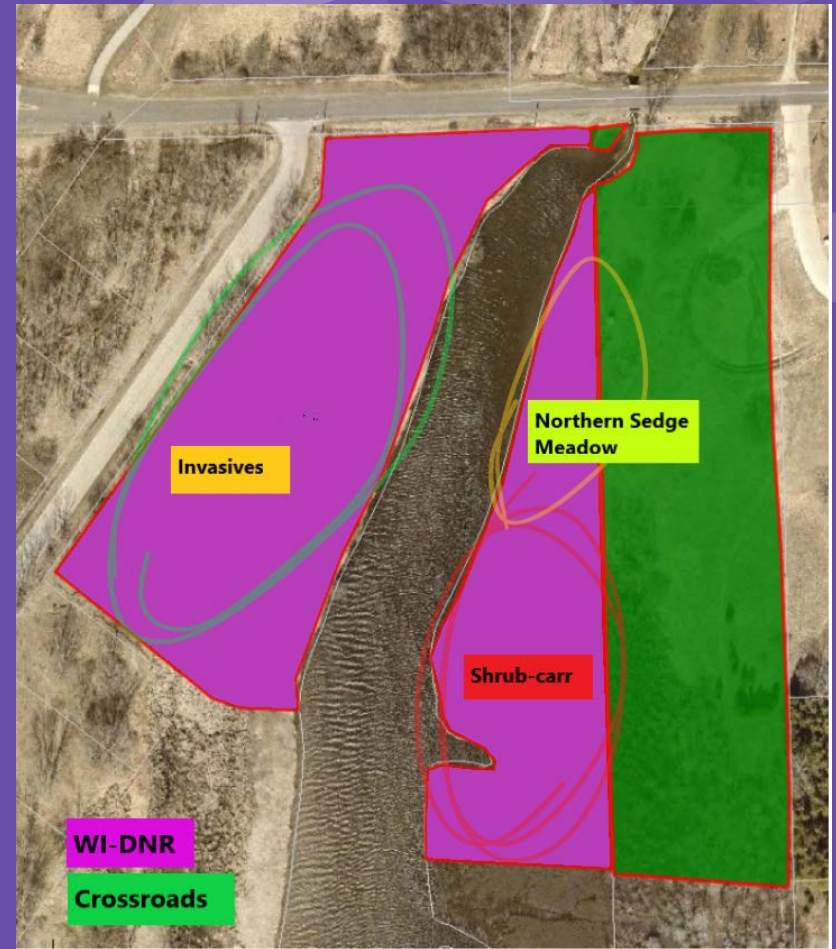








# Dead Ash in Shrub-carr Section



# Lack of Certain Native Diversity

Mean C  
 $\bar{C}_n$

4.0

ENTER SPECIES CODE:	ENTER % COVER:	Scientific Name	Common Name	C-Value	Wetland Ind. Status (MW/NCN)	WI Status	Growth Form	Duration	NHI Status	Invasive (NR40) Status	Accepted ITIS Name
SPIALB		<i>Spiraea alba</i>	white meadowsweet	4	FACW	Native	shrub	perennial	0	0	<i>Spiraea alba</i>
VERHAS		<i>Verbena hastata</i>	blue vervain, simpler's-joy, swamp verbe	3	FACW	Native	herb	biennial/per	0	0	<i>Verbena hastata</i>
TRIPRA		<i>Trifolium pratense</i>	red clover	0	FACU	Introduced	herb	perennial	0	0	<i>Trifolium pratense</i>
IMPCAP		<i>Impatiens capensis</i>	orange jewelweed, orange touch-me-not	2	FACW	Native	herb	annual	0	0	<i>Impatiens capensis</i>
CORSER		<i>Cornus sericea</i>	red osier dogwood	3	FACW	Native	shrub	perennial	0	0	<i>Cornus sericea</i>
RHACAT		<i>Rhamnus cathartica</i>	common buckthorn, European buckthor	0	FAC	Introduced	shrub	perennial	0	Restricted	<i>Rhamnus cathartica</i>
RHAFRA		<i>Frangula alnus</i>	European alder buckthorn, glossy buckti	0	FACW/FAC	Introduced	shrub	perennial	0	Restricted	<i>Frangula alnus</i>
RUDTRI		<i>Rudbeckia triloba</i>	brown-eyed Susan, three-lobed coneflo	4	FACU	Native	herb	0	0	0	<i>Rudbeckia triloba</i>
SOLGIG		<i>Solidago gigantea</i>	giant goldenrod	3	FACW	Native	herb	perennial	0	0	<i>Solidago gigantea</i>
VIBLAN		<i>Viburnum lantana</i>	wayfaring-tree	0	0	Introduced	shrub	perennial	0	0	<i>Viburnum lantana</i>
MALPUM		<i>Malus pumila</i>	cultivated apple	0	0	Introduced	tree	perennial	0	0	<i>Malus pumila</i>
PHLPRA		<i>Phleum pratense</i>	timothy	0	FACU	Introduced	herb	perennial	0	0	<i>Phleum pratense</i>
BROERE		<i>Bromus erectus</i>	erect brome, European brome, smooth	0	0	Introduced	herb	perennial	0	0	<i>Bromus erectus</i>
DAUCAR		<i>Daucus carota</i>	Queen Anne's-lace, wild carrot	0	UPL	Introduced	herb	biennial	0	Non-Restricted	<i>Daucus carota</i>
CENBIE		<i>Centaurea stoebe</i>	spotted knapweed	0	0	Introduced	herb	0	0	0	<i>Centaurea stoebe</i> subsp. <i>micranthos</i>
CIRARV		<i>Cirsium arvense</i>	Canada thistle, creeping thistle, field thi	0	FACU	Introduced	herb	perennial	0	Restricted	<i>Cirsium arvense</i>
STEMED		<i>Stellaria media</i>	common chickweed	0	FACU	Introduced	herb	annual/perer	0	0	<i>Stellaria media</i>
IRILAC		<i>Iris lacustris</i>	dwarf lake iris	9	FAC	Native	herb	perennial	Threatened	0	<i>Iris lacustris</i>
TOXRAD		<i>Toxicodendron radicans</i>	common eastern poison-ivy	4	FAC	Native	herb	perennial	0	0	<i>Toxicodendron radicans</i>
LONJAP		<i>Lonicera japonica</i>	Japanese honeysuckle	0	FACU	Introduced	shrub	perennial	0	Prohibited	<i>Lonicera japonica</i>
LOTGOR		<i>Lotus corniculatus</i>	bird's-foot deer-vetch, bird's-foot trefoil	0	FACU	Introduced	herb	perennial	0	Non-Restricted	<i>Lotus corniculatus</i>
PHAARU		<i>Phalaris arundinacea</i>	reed canary grass	0	FACW	Introduced	herb	perennial	0	Non-restricted	<i>Phalaris arundinacea</i>
ANECAN		<i>Anemone canadensis</i>	Canada anemone, Canadian anemone, i	4	FACW	Native	herb	perennial	0	0	<i>Anemone canadensis</i>
POPBAL		<i>Populus balsamifera</i>	balsam poplar, hackmatack	4	FACW	Native	tree	perennial	0	0	<i>Populus balsamifera</i>
EUPAMAC		<i>Eutrochium maculatum</i>	spotted In-Pye-weed	4	OBI	Native	herb	0	0	0	<i>Eutrochium maculatum</i>





# Thank you!

## References

---

WI DNR. (2008, June) REVERSING THE LOSS A Strategy to Protect, Restore and Explore Wisconsin Wetlands.

WI DNR. Northern Sedge Meadow.

WI DNR. Shrub-carr

UW-Green Bay. (Accessed 2022, August 2). UWGB Land Acknowledgement.  
<https://www.uwgb.edu/student-affairs/uwgb-land-acknowledgment/>

CrashCourse. (2021, January 12). What is Physical Geography? Crash Course Geography #4 [Video]. YouTube.  
<https://youtu.be/vIVVaZhRAEA>

Mike Grimm. (2021, December 24). Results of June and September / October 2021 Bird Surveys at the Crossroads at Big Creek Preserve in Sturgeon Bay, WI.

Gary S. Casper, Tara C. Hohoff. (2022, June 24). BAT MONITORING AT THE CROSSROADS AT BIG CREEK PRESERVE, DOOR COUNTY, WISCONSIN.

Dan Collins and Nancy Aten. (2021, February). Crossroads at Big Creek Land Restoration Plan.

(Jason Miller, personal communication, July 2022)

(Mike Grimm, personal communication, July 2022)

(Dan Collins, personal communication, July 2022)