



An abstract painting with a warm, golden-yellow and orange color palette. The composition features organic, flowing shapes and textures, possibly representing natural elements like leaves or water. The background is a mix of these warm tones, with some areas appearing more saturated than others. The overall effect is one of softness and natural beauty.

**How do you  
connect with  
space?**

An abstract painting with a warm color palette of reds, oranges, and yellows. The composition features layered, textured brushstrokes and some darker, more defined shapes that suggest organic forms or perhaps a map-like structure. The overall effect is one of depth and complexity.

**Story  
Art  
Core Memory  
Senses  
Spirit**

A person with long dreadlocks, wearing a tan hat and a black jacket, stands in a lush green field. They are holding a white notebook and a blue pen, appearing to be taking notes. The field is filled with tall grasses and various green plants. In the background, there are dense green trees under a bright blue sky with scattered white clouds.

# *Welcome to Hopkins Hollow*

*a pocket paradise within the inner city where the intersectionality of Art, Ecology, Restoration, and Community thrive*

# Seeing potential within the forgotten

- 1) Support and sustain the land space towards her full potential
  - a) Maintaining thriving ecosystems and model communities
  
- 1) Reconnect community to green and blue spaces



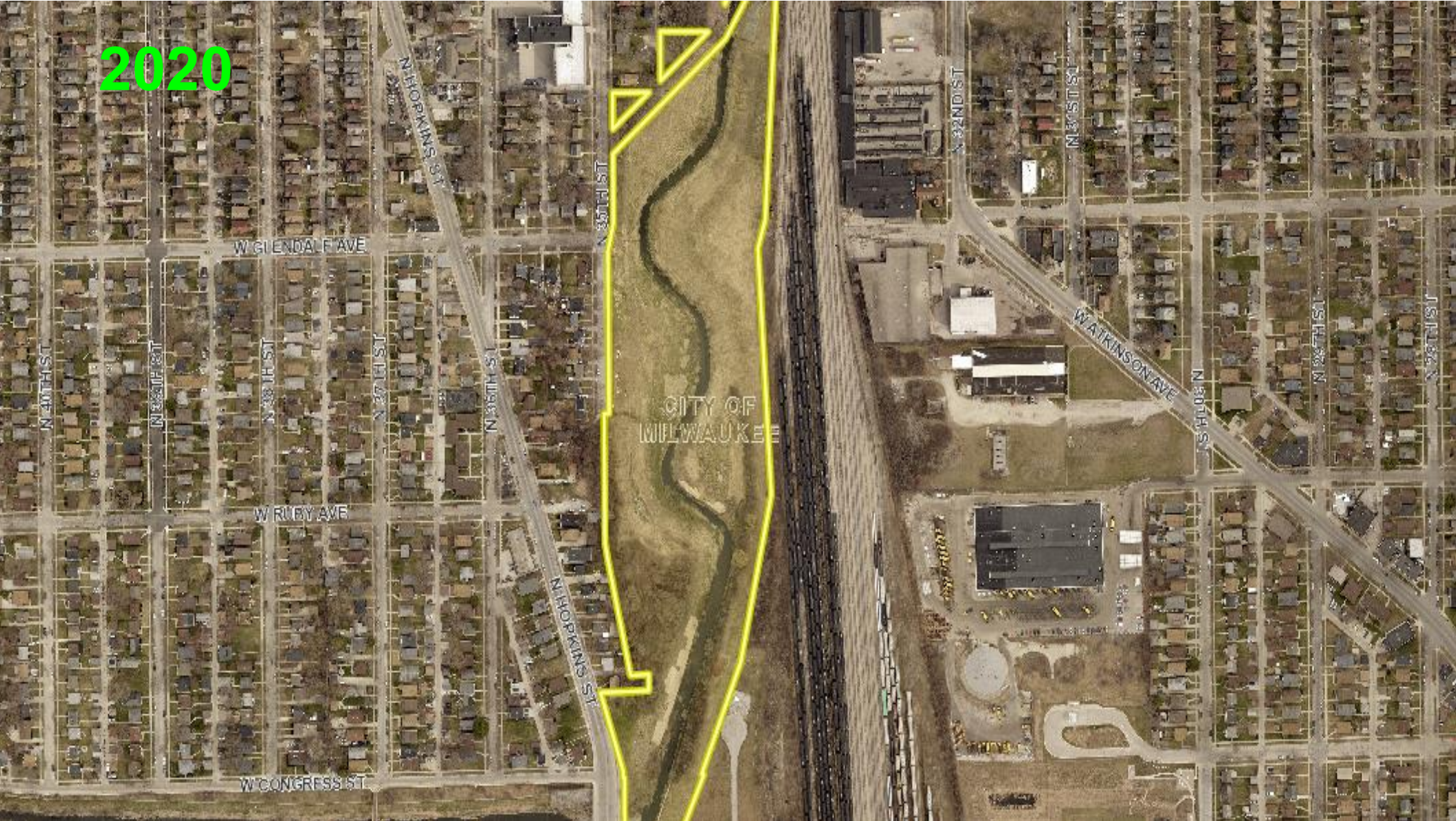


2000





2020







## My Map



## Identifiable biomes:

- 1) **Southern Mesic Forest** (orange)
- 1) **Riparian Community** (turquoise)
- 1) **Dry Mesic Prairie/Oak Savanna** (light orange)
- 1) **Cliff/Hillside Prairie and Wild Food** (yellow/purple, pink)

SWRPC, Maxar | Esri Community Maps Contributors, City of Milwaukee, WI, Milwaukee County Land Info, © OpenStreetMap, Microsoft, Esri, HERE, Garmin, SafeGraph, GeoTechnologies, Inc, METI/NASA, USGS, EPA, NPS, US Census Bureau, USDA



## **Southern Mesic Forest**

**an upland forest dominated by Sugar maple and Basswood with an open understory of Native Spring ephemerals such as Trout Lilies, Trilliums, and Violet.**

# Riparian Community

Land space adjacent to waterway that supports cooler water temperature, habitat for aquatic life, and preventative soil





## **Dry Mesic Prairie Savanna**

**a rare tall grass prairie with sandy to sandy loam soils that supports a diverse array of herbaceous plants. Some graminoids present are Big Blue Stem, Sweet Grass, and Prairie Drop Seed.**

## Hillside Prairie/Cliff and Wild Food







**Thankful  
for our  
Volunteers!**



**Engaging future leaders  
restorationists and Nature  
enthusiasts**



**Trail  
Building**

## Youth Engagement



## Birding, Observation





